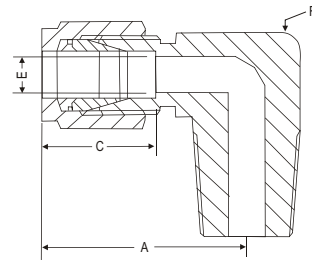


#### MALE ELBOW - ME



#### Dimensional Details :



Notes : Drawings are not to scale

#### Dimension, in.

Tube OD	NPT Male Thread Size	Part Number	A	C	E	F
1/8	1/8	ME11N	0.93	0.50	0.09	7/16
1/8	1/4	ME12N	0.97	0.50	0.09	1/2
1/4	1/4	ME22N	1.06	0.60	0.19	1/2
1/4	3/8	ME23N	1.17	0.60	0.19	11/16
1/4	1/2	ME24N	1.25	0.60	0.19	13/16
3/8	1/4	ME32N	1.20	0.66	0.28	5/8
3/8	3/8	ME33N	1.23	0.66	0.28	11/16
3/8	3/4	ME34N	1.46	0.66	0.28	1 1/16
1/2	1/4	ME42N	1.42	0.90	0.28	13/16
1/2	3/8	ME43N	1.42	0.90	0.38	13/16
1/2	1/2	ME44N	1.42	0.90	0.41	13/16
1/2	3/4	ME45N	1.57	0.90	0.41	1 1/16
3/4	1/2	ME54N	1.57	0.96	0.47	1 1/16
3/4	3/4	ME55N	1.57	0.96	0.62	1 1/16
1	3/4	ME75N	1.93	1.23	0.62	1 3/8
1	1	ME77N	1.93	1.23	0.88	1 3/8

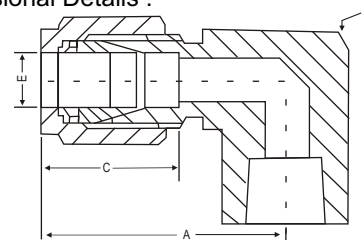
#### Dimension, mm.

Tube OD	NPT Male Thread Size	Part Number	A	C	E	F in
6	1/8	ME6M1N	27.0	15.3	4.8	1/2
6	1/4	ME6M2N	27.0	15.3	4.8	1/2
6	3/8	ME6M3N	29.8	15.3	4.8	11/16
6	1/2	ME6M4N	31.8	15.3	4.8	13/16
8	1/8	ME8M1N	28.8	16.2	4.8	9/16
8	1/4	ME8M2N	28.8	16.2	6.4	9/16
8	3/8	ME8M3N	30.6	16.2	6.4	11/16
8	1/2	ME8M4N	32.6	16.2	6.4	13/16
10	1/8	ME10M1N	31.5	17.2	4.8	11/16
10	1/4	ME10M2N	31.5	17.2	7.1	11/16
10	3/8	ME10M3N	31.5	17.2	7.9	11/16
10	1/2	ME10M4N	33.5	17.2	7.9	13/16
12	1/4	ME12M2N	36.0	22.8	7.1	13/16
12	3/8	ME12M3N	36.0	22.8	9.5	13/16
12	1/2	ME12M4N	36.0	22.8	9.5	13/16
12	3/4	ME12M5N	39.8	22.8	9.5	1 1/16
16	3/8	ME16M3N	38.0	24.4	9.5	15/16
16	1/2	ME16M4N	38.0	24.4	11.9	15/16
16	3/4	ME16M5N	39.8	24.4	12.7	1 1/16
20	1/2	ME20M4N	44.6	26.0	11.9	1 3/8
20	3/4	ME20M5N	44.6	26.0	15.9	1 3/8
25	3/4	ME25M5N	49.1	31.3	15.9	1 3/8
25	1	ME25M7N	49.1	31.3	21.8	1 3/8

#### FEMALE ELBOW - FE



#### Dimensional Details :



Notes : Drawings are not to scale

#### Dimension, in.

Tube OD	NPT Female Thread Size	Part Number	A	C	E	F
1/8	1/8	FE11N	0.97	0.50	0.09	1/2
1/8	1/4	FE12N	1.08	0.50	0.09	11/16
1/4	1/8	FE21N	1.06	0.60	0.19	1/2
1/4	1/4	FE22N	1.17	0.60	0.19	11/16
1/4	3/8	FE23N	1.25	0.60	0.19	13/16
1/4	1/2	FE24N	1.36	0.60	0.19	1
3/8	1/4	FE32N	1.23	0.66	0.28	11/16
3/8	3/8	FE33N	1.31	0.60	0.19	1
1/2	1/4	FE42N	1.42	0.90	0.41	13/16
1/2	3/8	FE43N	1.42	0.90	0.41	13/16
1/2	1/2	FE44N	1.53	0.90	0.41	1
3/4	1/2	FE54N	1.57	0.96	0.62	1 1/16
3/4	3/4	FE55N	1.76	0.96	0.62	1 3/8
1	3/4	FE75N	1.93	1.23	0.88	1 3/8
1	1	FE77N	2.11	1.23	0.88	1 11/16

#### Dimension, mm.

Tube OD	NPT Female Thread Size	Part Number	A	C	E	F in
6	1/8	FE6M1N	27.0	15.3	4.8	1/2
6	1/4	FE6M2N	29.8	15.3	4.8	11/16
6	1/2	FE6M4N	34.6	15.3	4.8	1
8	1/4	FE8M2N	30.6	16.2	6.4	11/16
10	1/8	FE10M1N	31.5	17.2	7.9	11/16
10	1/4	FE10M2N	33.5	17.2	7.9	13/16
12	1/4	FE12M2N	36.0	22.8	9.5	13/16
12	1/2	FE12M4N	38.8	22.8	9.5	1
16	1/2	FE16M4N	39.5	24.4	12.7	1 1/16

Dimensions and specifications shown are approximate, may vary from time to time.

Note : A and C dimensions are typical finger-tight