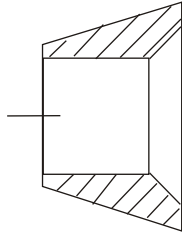


FRONT FERRULE - FF

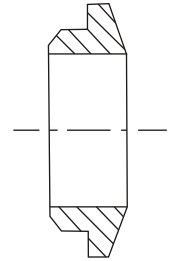


Dimension, in.

Tube OD	Part Number
1/8	FF11
1/4	FF22
3/8	FF33
1/2	FF44
3/4	FF55
1	FF77

Tube OD	Part Number
6	FF6M6
8	FF8M8
10	FF10M10
12	FF12M12
16	FF16M16
18	FF18M18
20	FF20M20
25	FF25M25

BACK FERRULE - BF

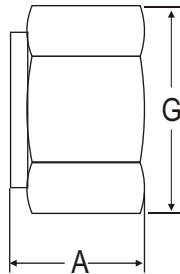


Dimension, in.

Tube OD	Part Number
1/8	BF11
1/4	BF22
3/8	BF33
1/2	BF44
3/4	BF55
1	BF77

Tube OD	Part Number
6	BF6M6
8	BF8M8
10	BF10M10
12	BF12M12
16	BF16M16
18	BF18M18
20	BF20M20
25	BF25M25

NUT - NT



Dimension, in.

Tube OD	Part Number	A	G
1/8	NT11	0.47	7/16
1/4	NT22	0.50	9/16
3/8	NT33	0.56	11/16
1/2	NT44	0.69	7/8
3/4	NT55	0.69	1 1/8
1	NT66	0.81	1 1/2

Dimension, mm.

Tube OD	Part Number	A	G
6	NT6M6	12.7	14
8	NT8M8	13.5	16
10	NT10M10	15.1	19
12	NT12M12	17.4	22
16	NT16M16	17.4	25
18	NT18M18	17.4	30
20	NT20M20	17.4	32
25	NT25M25	20.6	38

Dimensions and specifications shown are approximate, may vary from time to time.

Note : A and C dimensions are typical finger-tight