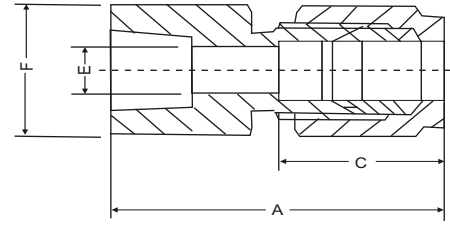


#### FEMALE CONNECTOR - FCS



Dimensional Details :



Notes : Drawings are not to scale

Dimension, in.

Tube OD	NPT Female Thread Size	Part Number	A	C	E	F
1/8	1/8	FCS11N	1.13	0.50	0.09	9/16
1/8	1/4	FCS12N	1.32	0.50	0.09	3/4
1/4	1/8	FCS21N	1.23	0.60	0.19	9/16
1/4	1/4	FCS22N	1.41	0.60	0.19	3/4
1/4	3/8	FCS23N	1.48	0.60	0.19	7/8
1/4	1/2	FCS24N	1.67	0.60	0.19	1 1/16
3/8	1/4	FCS32N	1.48	0.66	0.28	3/4
3/8	3/8	FCS33N	1.54	0.66	0.28	7/8
3/8	1/2	FCS34N	1.73	0.66	0.28	1 1/16
3/8	3/4	FCS35N	1.88	0.66	0.28	1 5/16
1/2	1/4	FCS42N	1.59	0.90	0.41	13/16
1/2	3/8	FCS43N	1.65	0.90	0.41	7/8
1/2	1/2	FCS44N	1.84	0.90	0.41	1 1/16
1/2	3/4	FCS45N	1.90	0.90	0.41	1 5/16
3/4	1/2	FCS54N	1.84	0.96	0.62	1 1/16
3/4	3/4	FCS55N	1.90	0.96	0.62	1 5/16
1	3/4	FCS75N	2.10	1.23	0.88	1 3/8
1	1	FCS77N	2.45	1.23	0.88	1 5/8

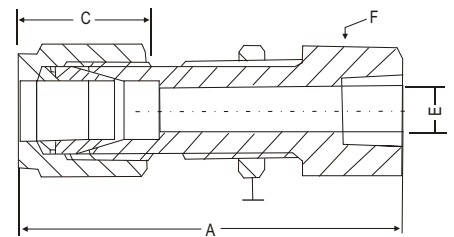
Dimension, mm.

Tube OD	NPT Female Thread Size	Part Number	A	C	E	F
6	1/4	FCS6M2N	35.8	15.3	4.8	19
6	3/8	FCS6M3N	37.6	15.3	4.8	22
6	1/2	FCS6M4N	42.5	15.3	4.8	27
8	1/4	FCS8M2N	37.0	16.2	6.4	19
8	3/8	FCS8M3N	38.5	16.2	6.4	22
8	1/2	FCS8M4N	43.3	16.2	6.4	27
10	1/4	FCS10M2N	37.8	17.2	7.9	19
10	3/8	FCS10M3N	39.4	17.2	7.9	22
10	1/2	FCS10M4N	44.2	17.2	7.9	27
12	1/4	FCS12M2N	40.3	22.8	9.5	22
12	3/8	FCS12M3N	41.9	22.8	9.5	22
12	1/2	FCS12M4N	46.7	22.8	9.5	27
16	1/2	FCS16M4N	46.9	24.4	12.7	27
20	1/2	FCS20M4N	47.9	26.0	15.9	30
20	3/4	FCS20M5N	49.7	26.0	15.9	35
22	3/4	FCS22M5N	49.7	26.0	18.3	35
22	1	FCS22M7N	57.9	26.0	18.3	41
25	3/4	FCS25M5N	53.4	31.3	21.8	35
25	1	FCS25M7N	62.3	31.3	21.8	41

#### BULKHEAD FEMALE CONNECTOR - BHFC



Dimensional Details :



Notes : Drawings are not to scale

Dimension, in.

Tube OD	NPT Female Thread Size	Part Number	A	C	E	F	Panel Hole Size	Max Panel Thickness
1/8	1/8	BHFC11N	1.76	0.50	0.09	9/16	21/64	0.50
1/4	1/8	BHFC21N	1.85	0.60	0.19	5/8	29/64	0.40
1/4	1/4	BHFC22N	2.04	0.60	0.19	3/4	29/64	0.40
3/8	1/4	BHFC32N	2.17	0.66	0.28	3/4	37/64	0.44
1/2	3/8	BHFC43N	2.43	0.90	0.41	15/16	49/64	0.50
1/2	1/2	BHFC44N	2.62	0.90	0.41	1 1/16	49/64	0.50

Dimension, mm.

Tube OD	NPT Female Thread Size	Part Number	A	C	E	F	Panel Hole Size	Max Panel Thickness
6	1/4	BHFC6M2N	51.8	15.3	4.8	19	11.5	10.2
12	1/2	BHFC12M4N	66.5	22.8	9.5	27	19.5	12.7

Dimensions and specifications shown are approximate, May vary from time to time.

Note : A and C dimensions are typical finger-tight