

NESS

STAINLESS STEEL PRESSURE GAUGE

SOLID FRONT TYPE

Model - PS

These version have been developed with solid baffle wall and blow out back which immediately releases in the event of accidental tube rupture.

Special Features :

- Stainless steel case & measuring system
- Solid front design features baffle wall interposed
- between the sensing system & the window and a pressure relieving back for increased safety
- Socket & case welded
- Stainless steel blow off Disc
- Dry or liquid filled
- Accuracy up to 0.6%
- Standard followed in general EN 837-1



Applications :

- Suitable for corrosive environments and gaseous or liquid media that will not obstruct the pressure system
- Process industry: chemical/petrochemical, power stations, mining, on and offshore, environmental technology, mechanical engineering and plant construction
- Food & Beverage

Specifications

STANDARD VERSION : 100mm and 150mm

Accuracy	: $\pm 1.6\%$ of F.S.
Ambient temperature	: -25°C to $+65^{\circ}\text{C}$
Operating pressure	: 75% of the Scale Value
Over pressure limit	: 125% of Max. Scale Value for Pressure Ranges up to 100 bar
	: 115% of Max. Scale Value for Pressure Ranges from 100 to 600 bar
	: 110% of Max. Scale Value for Pressure Ranges from 600 to 1000 bar
Case	: AISI 304 SS
Ring	: AISI 304 SS, Bayonet Type
Bourdon	: AISI 316L SS
Socket	: AISI 316L SS (Directly welded to Case)
Movement	: AISI 304 SS
Protection	: IP 65
Dial	: Aluminium, black graduation on white background
Pointer	: Aluminium, black coloured micrometer zero adjustable
Window	: Safety Glass
Blow off Disc	: AISI 304 SS

GLYCERINE FILLED VERSION (OPTION GF)

Accuracy	: $\pm 1.6\%$ of F.S.
Ambient Temperature	: Maximum 65°C
Process Temperature	: $-20^{\circ}\text{C} \sim 65^{\circ}\text{C}$
Window	: Shatter Proof / Safety Glass
Damping Liquids	: Glycerine 98% (others available as option)
Other Features	: Refer Specification of Standard Version

Temperature effect:

The variation of indication caused by effects of temperature is to be calculated by below formula; which is to be added in the specified accuracy while measurement :- Formula :

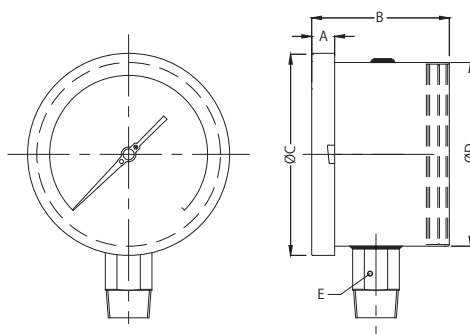
$$\pm 0.04 \times (t_2 - t_1) \% \text{ of F. S.}$$

where t_1 = reference temperature ($+20^{\circ}\text{C}$) and t_2 = ambient temperature in $^{\circ}\text{C}$.

DIMENSIONS :- FOR STANDARD MODEL

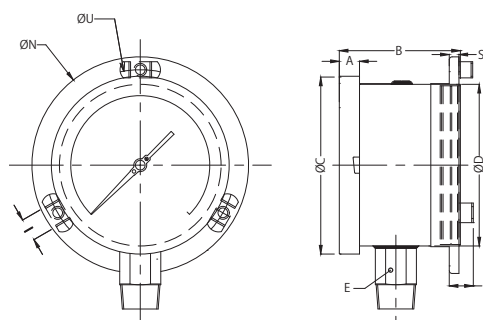
TYPE 11 TYPE 14 DRAWING OF MODEL (TYPE WISE)

TYPE 11



Size	A	B	ØC	ØD	E
100	12.5	70	111	100	22
150	15	70	161	149	22

TYPE 14



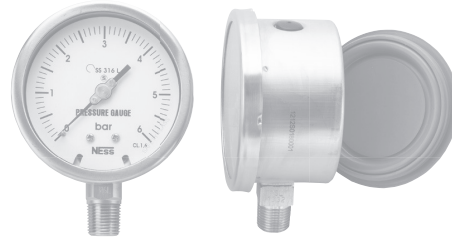
Size	A	B	ØC	ØD	E	ØN	ØU	H	ØI	S
100	12.5	70	111	100	22	134	118	15	6	1
150	15	70	161	149	22	186	168	15	6	1

SELECTION OF MODEL

(1) MODEL CODE

(2) DIAL SIZE

Dial Size	Code
100	4
150	6



(3) MOUNTING TYPE

Mounting Type	Code
DIRECT BOTTOM ENTRY	11
WALL / SURFACE / PROJECTION MOUNTING WITH BOTTOM ENTRY	14

(4) GAUGE CONNECTION SIZE

1/2" BSP (M)	4BM	3/8" NPT (M)	3NM
1/2" BSPT (M)	4TM	3/8" BSPT (M)	3TM
1/2" NPT (M)	4NM	3/8" BSP (M)	3BM
1/2" G (M)	4GM	3/8" R (M)	3RM
1/2" R (M)	4RM	3/8" G (M)	3GM

(5) RANGE

kg/cm ² or bar	
-1-0	0-6
-1-0.6	0-10
-1-1.5	0-16
-1-4	0-25
-1-6	0-40
-1-10	0-60
-1-16	0-100
0-0.6	0-160
0-1	0-250
0-1.6	0-400
0-2.5	0-600
0-4	0-1000

REFER TO THE FOLLOWING TABLE

MPa	
-0.1-0.3	0-2
-0.1-0.6	0-2.5
-0.1-0.2	0-3.5
-0.1-0	0-4
0-0.2	0-6
0-0.25	0-10
0-0.4	0-16
0-0.6	0-25
0-1	0-40
0-1.6	0-60
	0-100

(OTHER UNIT & DUAL SCALE CAN BE ARRANGED ON REQUEST.)

(6) OPTIONS

CF	AISI 316 CASE, BEZEL & BLOW OFF DISC	AD	ACCURACY +/- 1.0% OF F.S.
TN	CALIBRATION CERTIFICATE TRACEABLE TO NATIONAL/ INTERNATIONAL STANDARDS	DS	INTEGRAL DAMPENING SCREW (AISI 316 SS)
TS	SS TAG PLATE	DM	INTEGRAL DAMPENING SCREW (MONEL)
GF	DAMPENING LIQUID GLYCERINE FILLED	PS	INTERNAL OVER PRESSURE STOP
SF	DAMPENING LIQUID SILICON OIL FILLED	VS	INTERNAL VACUUM STOP
TD	DIAL TAG MARKING	BM	MONEL BOURDON & SOCKET (MONEL)
AC	ACCURACY +/- 0.6% OF F.S.		

Example	1	2	3	4	5	6
SELECTION OF MODEL	PS	4	11	4NM	0-10bar	Option XX

PS

4

11

4NM

0-10bar

XX

Below options are provided on request of customer.

CE	CE MARKING (AS PER PED 97/23/EC) SS
NC	CONFORMITY AS PER NACE MR 0175
CC	FIVE POINT CALIBRATION CERTIFICATE
HT	HELIUM LEAK TEST
IA	IBR APPROVAL
MC	MATERIAL TEST CERTIFICATE
WV	ON-OFF TYPE VENT PLUG
OS	OXYGEN SERVICE
DC	CUSTOM DESIGNED DIAL

NESSTECH INC.
INTERNATIONAL SALES DEPARTMENT

1-12-1 Akanehama, Narashino-shi, Chiba
275-0024, JAPAN

PHONE +81-47-453-1182

F A X +81-47-453-0727

E-Mail global.sales@nesstech.co.jp

■ **NESSTECH INSTRUMENTS PVT. LTD (INDIA)**

Survey No. 26/2, "G" Type, Global Industrial Park,
Near Nahuli Railwaycrossing, Village Valvada, Vapi,
Tal Umbergaon, Dist Valsad-396191, Gujrat

TEL: +91-260-299-6920

■ **NESS TECHNOLOGY (M) SDN BHD (MALAYSIA)**

No. 42A Jalan PUJ 3/8, Taman Puncak Jalil, Bandar Putra Permai,
43300 Seri Kembangan, Selangor

TEL: +603-8940-1134/8940-1059 FAX: +603-8999-4133

We reserve the rights to change models and specifications without prior notice.