

NESS

S.S. CASE TEST GAUGE (ACC. $\pm 0.25\%$)

BOURDON TUBE TYPE

Model - PR

Special Features :

- Stainless steel case & high precision measuring system
- High resolution dial
- Anti parallax mirror band (eye friendly)
- Socket directly welded to case
- Standard followed in general EN 837-1/ IS 3624
- Calibration certificate with traceability to National / International Standard.

Applications :

- Calibration / testing in laboratory
- Fits for various process Industries and all gaseous / liquid media that will not obstruct the pressure system.



Specifications

STANDARD VERSION : 150mm, 200mm & 250mm

Accuracy	: $\pm 0.25\%$ of F.S. (At +20°C.
Ambient temperature	: Maximum 65°C
Process temperature	: Maximum 65°C
Operating pressure	: 75% of the Scale Value
Case	: AISI 304 SS
Ring	: AISI 304 SS (Rolling Type)
Bourdon	: Beryllium Copper
Socket	: AISI 316L SS
Movement	: High Precision Jewel Bearing Type
Integral Dampening Screw	: AISI 316 SS
Protection	: IP 65
Dial	: Aluminium, Green with Black Marking & Anti Parallax Mirror Band
Pointer	: Balanced, Knife Edge Micrometer Adjustable
Pointer Stopper	: Spring Type
Gasket	: Neoprene
Welding	: Alloy Brazing
Window	: Safety Glass
Blow Off Disc	: Neoprene
Carrying Case	: Wooden carrying case
Calibration Certificate	: Calibration certificate traceable to National / International standard.

Temperature effect:

The variation of indication caused by effects of temperature is to be calculated by below formula;

which is to be added in the specified accuracy while measurement :- Formula :

$\pm 0.04 \times (t_2 - t_1) \% \text{ of F. S.}$

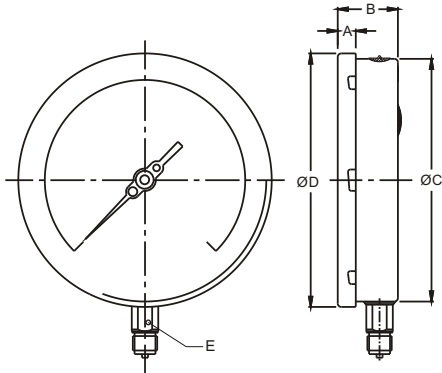
where t_1 = reference temperature (+20°C) and t_2 = ambient temperature in °C..

DIMENSIONS :- FOR STANDARD MODEL

TYPE 11 TYPE 14 TYPE 21 TYPE 22 TYPE 23

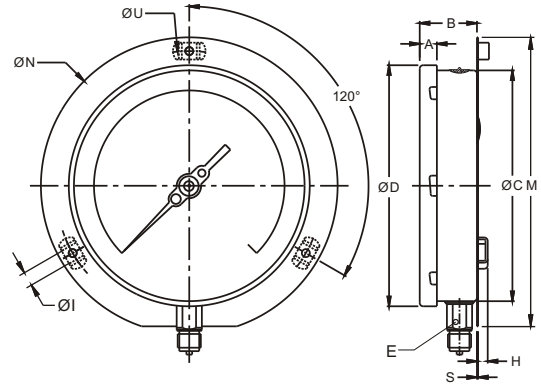
DRAWING OF MODEL (TYPE WISE)

TYPE 11 - DIRECT BOTTOM ENTRY



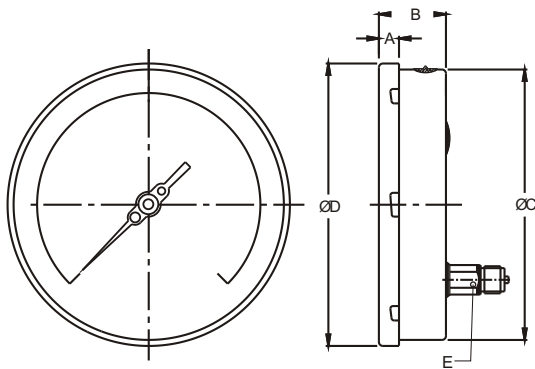
Size	A	B	ØC	ØD	E
150	15	49	149	161	22
200	18	49	201.5	216.5	22
250	18	52	250	263	22

TYPE 14 - WALL / SURFACE WITH BOTTOM ENTRY



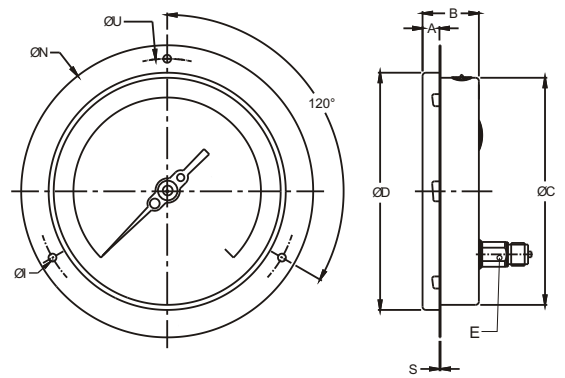
Size	A	B	ØC	ØD	E	M	ØN	ØU	H	ØI	S
150	15	46.5	149	161	22	174	186	168	14.5	6	6
200	18	49	201.5	216.5	22	229	245	230	14.5	7	1.5
250	18	52	263	263	22	286.5	290	276	14.5	7	1.5

TYPE 21 - DIRECT LOWER BACK ENTRY



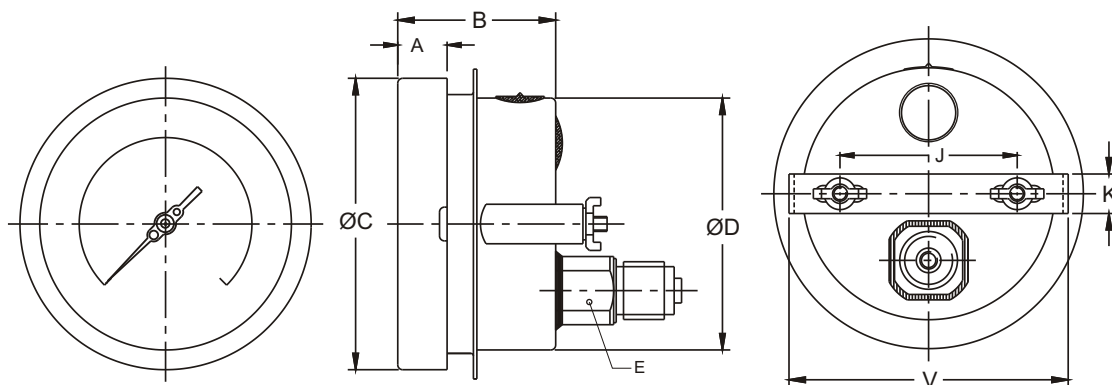
Size	A	B	ØC	ØD	E
150	15	49	149	161	22
200	18	49	201.5	216.5	22
250	18	52	250	263	22

TYPE 22 - DIRECT LOWER BACK ENTRY WITH FRONT FLANGE



Size	A	B	ØC	ØD	E	ØN	ØU	ØI	S
150	15	49	149	161	22	186	168	6	5
200	18	49	201.5	216.5	22	245	230	7	1.5
250	18	52	250	263	22	290	276	7	1.5

TYPE 23 - DIRECT LOWER BACK ENTRY WITH MOUNTING BRACKET



Size	A	B	ØC	ØD	E	J	K	V
150	15	49	149	161	22	106.5	16	166
200	18	49	201.5	216.5	22	165	16	208
250	18	52	250	263	22	180	30	270

Note: Drawings are not to scale. All Dimensions are in mm.

SELECTION OF MODEL

(1) MODEL CODE

(2) DIAL SIZE

Dial Size	Code
150	6
200	8
250	10

(3) MOUNTING TYPE

Mounting Type	Code
DIRECT BOTTOM ENTRY	11
WALL / SURFACE / PROJECTION MOUNTING WITH BOTTOM ENTRY	14
DIRECT LOWER BACK ENTRY	21
DIRECT LOWER BACK ENTRY WITH FRONT FLANGE	22
DIRECT LOWER BACK ENTRY WITH MOUNTING BRACKET	23

(4) GAUGE CONNECTION SIZE

1/2" BSP (M) (STD)	4BM
1/2" NPT (M)	4NM
1/4" NPT (M)	2NM

Note :- Female Gauge Connection are available on request.

(5) RANGE

REFER TO THE FOLLOWING TABLE

Kg/cm ²	Kg/cm ²	Kg/cm ²
0 - 0.6 kg/cm ²	0 - 25 kg/cm ²	0 - 350 kg/cm ²
0 - 1 kg/cm ²	0 - 28 kg/cm ²	0 - 400 kg/cm ²
0 - 1.6 kg/cm ²	0 - 35 kg/cm ²	0 - 600 kg/cm ²
0 - 2 kg/cm ²	0 - 40 kg/cm ²	0 - 700 kg/cm ²
0 - 2.5 kg/cm ²	0 - 60 kg/cm ²	0 - 1000 kg/cm ²
0 - 4 kg/cm ²	0 - 70 kg/cm ²	0 - 1600 kg/cm ²
0 - 6 kg/cm ²	0 - 100 kg/cm ²	-1 - 0 kg/cm ²
0 - 7 kg/cm ²	0 - 160 kg/cm ²	
0 - 10 kg/cm ²	0 - 200 kg/cm ²	
0 - 16 kg/cm ²	0 - 250 kg/cm ²	
0 - 21 kg/cm ²	0 - 280 kg/cm ²	

(Other Pressure UNIT like Bar, kPa, MPa, psi, kg/cm² or Dual Scale like kg/cm² with psi, kPa with bar, bar with psi ,etc will be provided on request)

(6) OPTIONS

DC	CUSTOM DESIGNED DIAL
TS	SS TAG PLATE
HT	HELIUM LEAK TEST

Example	1	2	3	4	5	6
SELECTION OF MODEL	PR	6	11	4BM	0 - 10 kg/cm ²	XX

NESSTECH INC.

INTERNATIONAL SALES DEPARTMENT

1-12-1 Akanehama, Narashino-shi, Chiba
275-0024, JAPAN

PHONE +81-47-453-1182
F A X +81-47-453-0727

■ NESSTECH INSTRUMENTS PVT. LTD (INDIA)

Survey No. 26/2, "G" Type, Global Industrial Park,
Near Nahuli Railwaycrossing, Village Valvada, Vapi,
Tal Umbergaon, Dist Valsad-396191, Gujrat
TEL: +91-260-299-6920

■ NESS TECHNOLOGY (M) SDN BHD (MALAYSIA)

No. 42A Jalan PUJ 3/8, Taman Puncak Jalil, Bandar Putra Permai,
43300 Seri Kembangan, Selangor
TEL: +603-8940-1134/8940-1059 FAX: +603-8999-4133