

NESS

STAINLESS STEEL PRESSURE GAUGE

63mm BOURDON TUBE TYPE

Model - PM

These gauges are designed for long & reliable service under rugged condition.

Special Features :

- Stainless steel case & measuring system
- Rugged Construction
- Dry or liquid filled
- Standard followed in general EN 837-1

Applications :

- Food & Beverage
- Pharmaceutical
- Chemical & Petrochemical Industries
- Pumps
- Hydro-cleaning Machines
- Engine compressor, turbines and diesel engine
- Refrigerating Plants



Specifications

STANDARD VERSION : 63mm

Accuracy	: $\pm 1.6\%$ of F.S.
Ambient temperature	: -25°C to $+65^{\circ}\text{C}$
Operating pressure	: 75% of the Scale Value
Over pressure limit	: 125% of Max. Scale Value for Pressure Ranges up to 100 bar
	: 115% of Max. Scale Value for Pressure Ranges from 100 to 600 bar
	: 110% of Max. Scale Value for Pressure Ranges from 600 to 1000 bar
Case	: AISI 304 SS
Ring	: AISI 304 SS
Bourdon	: AISI 316L SS
Socket	: AISI 316 SS
Movement	: AISI 304 SS
Protection	: IP 65
Dial	: Aluminium, black graduation on white background
Pointer	: Black coloured, Fixed
Window	: Plexi Glass

GLYCERINE FILLED VERSION (OPTION GF)

Accuracy	: $\pm 1.6\%$ of F.S.
Ambient Temperature	: Maximum 65° C
Process Temperature	: -20 ~ 65° C
Window	: Plexi Glass
Damping Liquids	: Glycerine 98% (others available as option)
Other Features	: Refer Specification of Standard Version

Temperature effect:

The variation of indication caused by effects of temperature is to be calculated by below formula; which is to be added in the specified accuracy while measurement :- Formula :

$$\pm 0.04 \times (t_2 - t_1) \% \text{ of F. S.}$$

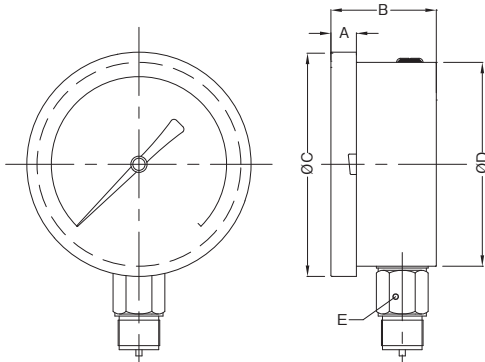
where t_1 = reference temperature (+20° C) and t_2 = ambient temperature in ° C.

DIMENSIONS :- FOR STANDARD MODEL

TYPE 11 TYPE 14 TYPE 31 TYPE 32

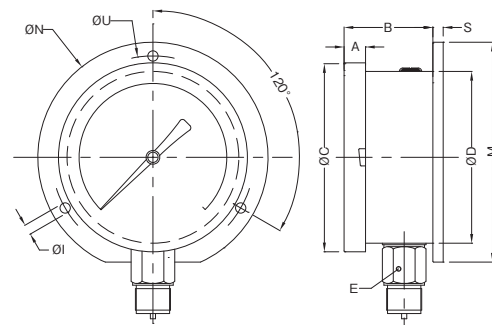
DRAWING OF MODEL (TYPE WISE)

TYPE 11



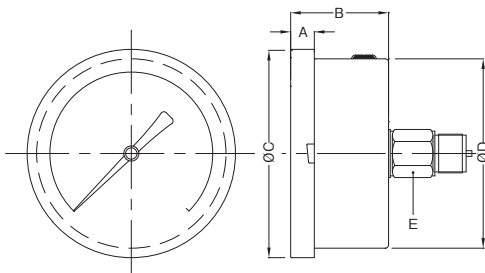
Size	A	B	ØC	ØD	E
63	10	31	69.5	62.5	A/F 14

TYPE 14



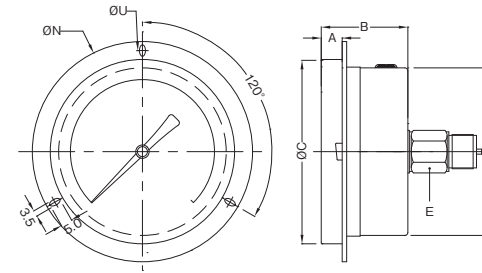
Size	A	B	ØC	ØD	E	S	ØN	ØI	ØU	M
63	10	32	69.5	62.5	A/F 14	7	86	3.6	75	80

TYPE31



Size	A	B	ØC	ØD	E
63	10	32	69.5	62.5	A/F 14

TYPE32



Size	A	B	ØC	ØD	E	ØN	ØU
63	10	32	69.5	62.5	A/F 14	86	75

SELECTION OF MODEL

(1) MODEL CODE

PM	63mm Pressure Gauge
-----------	----------------------------

(2) DIAL SIZE

Dial Size	Code
63	2

(3) MOUNTING TYPE

Mounting Type	Code
DIRECT BOTTOM ENTRY	11
WALL / SURFACE / PROJECTION MOUNTING WITH BOTTOM ENTRY	14
DIRECT CENTER BACK ENTRY	31
CENTER BACK ENTRY WITH FRONT FLANGE	32

(4) GAUGE CONNECTION SIZE

1/8" BSP (M)	1BM
1/8" NPT (M)	1NM
1/8" BSPT (M)	1TM
1/4" BSP (M)	2BM
1/4" BSPT (M)	2TM
1/4" NPT (M)	2NM
1/4" G (M)	2GM

1/4" R (M)	2RM
3/8" BSP (M)	3BM
3/8" BSPT (M)	3TM
3/8" NPT (M)	3NM
3/8" G (M)	3GM
3/8" R (M)	3RM

(5) RANGE

kg/cm ² or bar	
-1-0	0-6
-1-0.6	0-10
-1-1.5	0-16
-1-4	0-25
-1-6	0-40
-1-10	0-60
-1-16	0-100
0-0.6	0-160
0-1	0-250
0-1.6	0-400
0-2.5	0-600
0-4	0-1000

REFER TO THE FOLLOWING TABLE

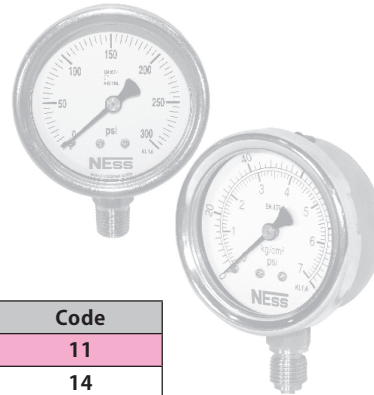
Mpa	
-0.1-0.3	0-2.5
-0.1-0.6	0-3.5
-0.1-0.2	0-4
-0.1-0	0-6
0-0.2	0-10
0-0.25	0-16
0-0.4	0-25
0-0.6	0-40
0-1	0-60
0-1.6	0-100
0-2	

(OTHER UNIT & DUAL SCALE CAN BE ARRANGED ON REQUEST.)

(6) OPTIONS

CF	AISI 316 CASE & BEZEL	TD	DIAL TAG MARKING
TN	CALIBRATION CERTIFICATE TRACEABLE TO NATIONAL/ INTERNATIONAL STANDARDS	DS	INTEGRAL DAMPENING SCREW (AISI 316 SS)
SF	DAMPENING LIQUID SILICON OIL FILLED	TS	SS TAG PLATE
GF	DAMPENING LIQUID GLYCERINE FILLED		

Example	1	2	3	4	5	6
Order Detail	PM	2	11	2NM	0-10 bar	Option xxx



PM

2

11

2NM

0-10bar

XX

Below options are provided on request of customer.

CC	FIVE POINT CALIBRATION CERTIFICATE
HT	HELIUM LEAK TEST
MC	MATERIAL TEST CERTIFICATE
WV	ON-OFF TYPE VENT PLUG
OS	OXYGEN SERVICE
DC	CUSTOM DESIGNED DIAL

NESSTECH INC.
INTERNATIONAL SALES DEPARTMENT

1-12-1 Akanehama, Narashino-shi, Chiba
275-0024, JAPAN

PHONE +81-47-453-1182

F A X +81-47-453-0727

E-Mail global.sales@nesstech.co.jp

■ **NESSTECH INSTRUMENTS PVT. LTD (INDIA)**

Survey No. 26/2, "G" Type, Global Industrial Park,
Near Nahuli Railwaycrossing, Village Valvada, Vapi,
Tal Umbergaon, Dist Valsad-396191, Gujrat

TEL: +91-260-299-6920

■ **NESS TECHNOLOGY (M) SDN BHD (MALAYSIA)**

No. 42A Jalan PUJ 3/8, Taman Puncak Jalil, Bandar Putra Permai,
43300 Seri Kembangan, Selangor

TEL: +603-8940-1134/8940-1059 FAX: +603-8999-4133

We reserve the rights to change models and specifications without prior notice.