

NESS

STAINLESS STEEL PRESSURE GAUGE

CAPSULE TYPE

Model - PC

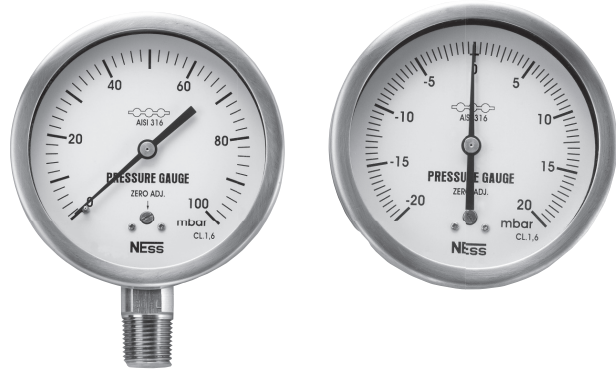
The capsule elements comprised two circular - shaped, convoluted membranes sealed tight around their circumference. The pressure acts on the inside of this capsule and the generated stroke movement is shown by pointer as measure of pressure. Pressure gauge with capsule elements is more especially suitable for gaseous media and relatively low pressure.

Special Features :

- Stainless steel case & ring
- Most suitable for air & gaseous application measurement from 25 mbar to 600mbar
- Bottom & Back Mounting
- Vacuum & Compound Ranges
- Standard followed in general EN 837-3

Applications :

- Food & Beverage
- Pharmaceutical, Conventional
- Low Pressure Draft Measurement



Specifications

STANDARD VERSION : 63mm, 100mm, 125mm and 150mm

Accuracy	: $\pm 1.6\%$ of F.S.
Ambient temperature	: -25°C to $+65^{\circ}\text{C}$
Operating pressure	: 75% of the Scale Value
Over pressure	: 110% of the Scale Value
Case	: AISI 304 SS
Ring	: AISI 304 SS, Bayonet Type
Socket	: AISI 316L SS (Directly Welded to Case)
Movement	: AISI 304 SS
Capsule	: AISI 316 SS (With Laser Welded)
Protection	: IP 65 (IP 55 for Dial Size 63mm)
Dial	: Aluminium, black graduation on white background
Pointer	: Aluminium, black coloured micrometer zero adjustable (Fixed for 63mm)
Window	: Safety Glass

Temperature effect:

The variation of indication caused by effects of temperature is to be calculated by below formula; which is to be added in the specified accuracy while measurement :- Formula :

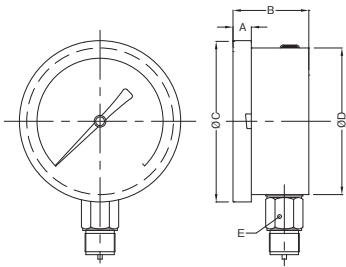
$$\pm 0.04 \times (t_2 - t_1) \% \text{ of F. S.}$$

where t_1 = reference temperature ($+20^{\circ}\text{C}$) and t_2 = ambient temperature in $^{\circ}\text{C}$.

DIMENSIONS :- FOR STANDARD MODEL

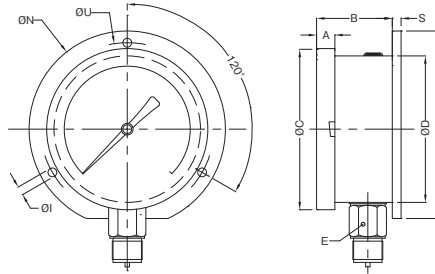
TYPE 11 TYPE 14 TYPE 21 TYPE 31 TYPE 33
DRAWING OF MODEL (TYPE WISE)

TYPE 11(63mm)



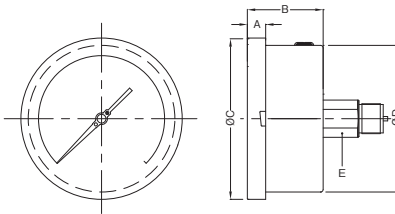
Size	A	B	ØC	ØD	E
63	12.5	46	77.5	66.5	A/F 14

TYPE 14(63mm)



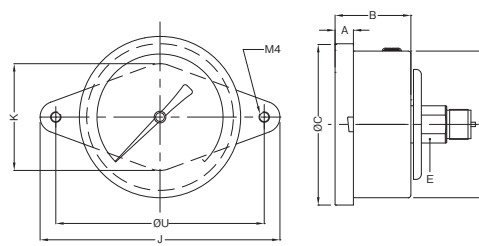
Size	A	B	ØC	ØD	E	S	ØN	ØI	ØU	M
63	12.5	46	77.5	66.5	A/F 14	7	86	3.6	75	80

TYPE31(63mm)



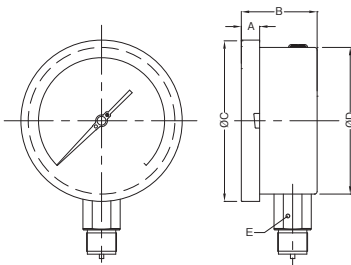
Size	A	B	ØC	ØD	E
63	12.5	46	77.5	66.5	A/F 14

TYPE33(63mm)



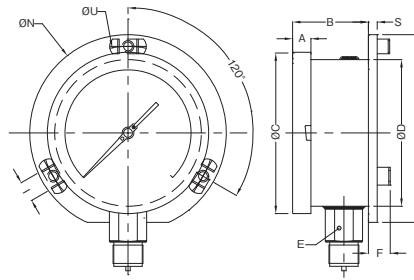
Size	A	B	ØC	ØD	E	J	K	ØU
63	12.5	46	77.5	66.5	A/F 14	91	38	70.5

TYPE 11(100mm,125mm,150mm)



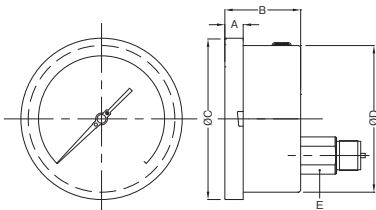
Size	A	B	ØC	ØD	E
100	12.5	47	111	100	22
125	15	48	129	119	22
150	15	49	161	149	22

TYPE 14(For 100mm,125mm,150mm)



Size	A	B	ØC	ØD	E	S	ØN	ØI	ØU	M	F
100	12.5	45	111	100	22	6	134	6	118	128	14.5
125	15	46	129	119	22	4	152	6	138	--	15
150	15	46.5	161	149	22	5.5	186	6	168	174.5	15

TYPE21(For 100mm,125mm,150mm)



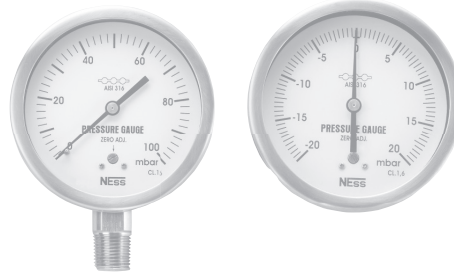
Size	A	B	ØC	ØD	E
100	12.5	47	111	100	22
125	15	48	129	119	22
150	15	49	161	149	22

SELECTION OF MODEL

(1) MODEL CODE

(2) DIAL SIZE

Dial Size	Code
63	2
100	4
125	5
150	6



(3) MOUNTING TYPE

Mounting Type	Code
DIRECT BOTTOM ENTRY	11
WALL / SURFACE / PROJECTION MOUNTING WITH BOTTOM ENTRY	14
DIRECT LOWER BACK ENTRY (Not with 63mm)	21
DIRECT CENTER BACK ENTRY (Only with 63mm)	31
CENTER BACK ENTRY WITH MOUNTING BRACKET	33

(4) GAUGE CONNECTION SIZE

1/2" BSP (M)	4BM	1/2" G (M)	4GM
1/2" BSPT (M)	4TM	3/8" G (M)	3GM
1/2" NPT (M)	4NM	1/4" G (M)	2GM
3/8" BSP (M)	3BM	1/2" R (M)	4RM
3/8" BSPT (M)	3TM	3/8" R (M)	3RM
3/8" NPT (M)	3NM	1/4" R (M)	2RM

Note :- 1/4" Connection only available with 63mm.

(5) RANGE

REFER TO THE FOLLOWING TABLE

Single Scale - mmWC		Vacuum - mmWC		Compound - mmWC	
0 - 250	0 - 2000	-250 - 0	-2000 - 0	-100 - 150	-800 - 1200
0 - 400	0 - 2500	-400 - 0	-2500 - 0	-150 - 250	-1000 - 1500
0 - 600	0 - 4000	-600 - 0	-4000 - 0	-200 - 400	-1500 - 2500
0 - 1000	0 - 6000	-1000 - 0	-6000 - 0	-400 - 600	-2000 - 4000
0 - 1600		-1600 - 0			

(OTHER UNIT & DUAL SCALE CAN BE ARRANGED ON REQUEST.)

(6) OPTIONS

CF	AISI 316 CASE & BEZEL	TD	DIAL TAG MARKING
TN	CALIBRATION CERTIFICATE TRACEABLE TO NATIONAL/ INTERNATIONAL STANDARDS	DS	INTEGRAL DAMPENING SCREW(AISI 316 SS)
TS	SS TAG PLATE	TG	TOUGHENED GLASS

Example	1	2	3	4	5	6
SELECTION OF MODEL	PC	4	11	4NM	0-250 mmWC	Option XX

PC

4

11

4NM

0-250mmWC

XX

Below options are provided on request of customer.

CC	FIVE POINT CALIBRATION CERTIFICATE
HT	HELIUM LEAK TEST
MC	MATERIAL TEST CERTIFICATE
WV	ON-OFF TYPE VENT PLUG

NESSTECH INC.
INTERNATIONAL SALES DEPARTMENT

1-12-1 Akanehama, Narashino-shi, Chiba
275-0024, JAPAN

PHONE +81-47-453-1182

F A X +81-47-453-0727

E-Mail global.sales@nesstech.co.jp

■ **NESSTECH INSTRUMENTS PVT. LTD (INDIA)**

Survey No. 26/2, "G" Type, Global Industrial Park,
Near Nahuli Railwaycrossing, Village Valvada, Vapi,
Tal Umbergaon, Dist Valsad-396191, Gujrat

TEL: +91-260-299-6920

■ **NESS TECHNOLOGY (M) SDN BHD (MALAYSIA)**

No. 42A Jalan PUJ 3/8, Taman Puncak Jalil, Bandar Putra Permai,
43300 Seri Kembangan, Selangor

TEL: +603-8940-1134/8940-1059 FAX: +603-8999-4133

We reserve the rights to change models and specifications without prior notice.