

Special Features :

- Stainless steel case & measuring system.
- Dry & liquid filled
- Accuracy up to 1.0% of F.S.
- Standard followed in general EN 837-3/ IS 3624

Applications :

- Chemical & Petrochemical Industries
- Food & Beverages
- Pharmaceutical Industries
- Refinery
- Aerospace
- Nuclear power plant
- Fertilizer
- Sugar
- Cement
- Pulp, paper & allied Industries



Specifications

STANDARD VERSION : 150mm

Accuracy	: ± 1.6% of F.S. for ranges up to 1 bar
	: ± 1.0% of F.S. for ranges 1 bar to 6 bar
Ambient temperature	: -25°C to +65°C
Process temperature	: Max. 100°C
Static Pressure	: 6 Kg/Cm ² up to ranges 0.6 bar
	: 25 Kg/Cm ² up to ranges 1 bar to 2.5 bar
	: 40 Kg/Cm ² up to ranges 4 bar to 6 bar

Case & Bezel	: AISI 304 SS (Bayonet Type)
Bellow	: AISI 316L SS
Process Connection	: ½" NPT(M) x 2
Movement	: AISI 304 SS

Protection	: IP 65
Dial	: Aluminium, black graduation on white background with zero adjustment provision
Pointer	: Aluminium, black coloured, Micrometer Zero Adjustable
Window	: Safety Glass
Gasket	: Neoprene
Vent Plug	: Neoprene
Blow Off Disc	: Neoprene
Scale Amplitude	: 80° to 270° (Depends on Range)

GLYCERINE FILLED VERSION (OPTION GF)

Accuracy	: ± 1.6% of F.S.
Ambient temperature	: Maximum 65°C
Process temperature	: -25°C to +65°C
Window	: Safety Glass
Dampening Liquid	: Glycerine 98% (Other available as option)
Other Features	: Refer Specification of Standard Version

Temperature effect:

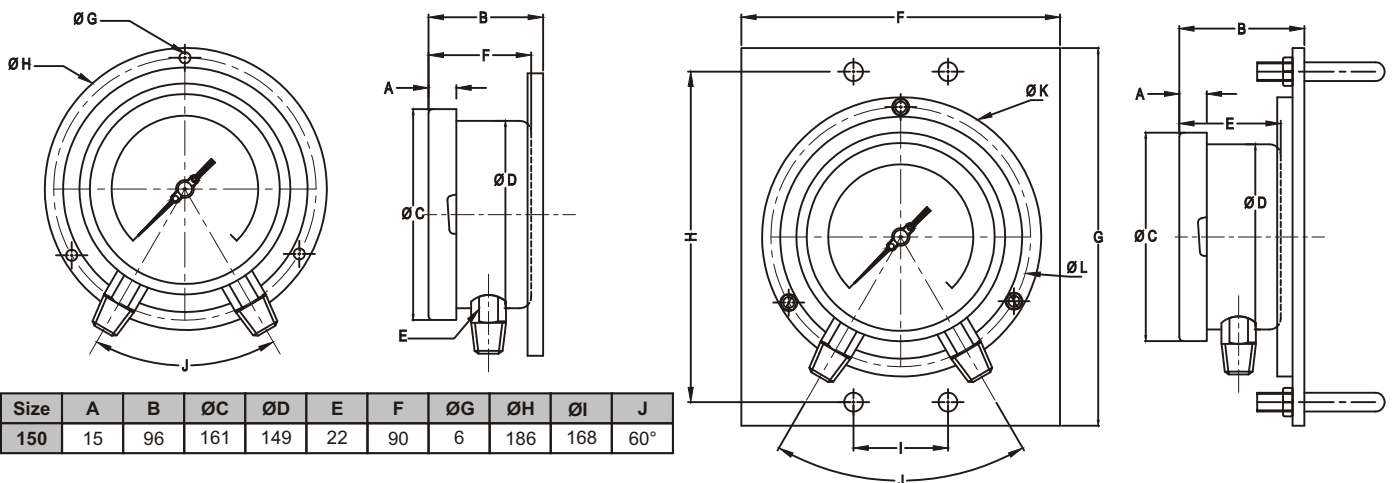
The variation of indication caused by effects of temperature is to be calculated by below formula; which is to be added in the specified accuracy while measurement :- Formula :
 $\pm 0.08 \times (t_2 - t_1) \% \text{ of F. S.}$
 where t1 = reference temperature (+20°C) and t2 = ambient temperature in °C..

DIMENSIONS : - FOR STANDARD MODEL

TYPE 14 TYPE 41

DRAWING OF MODEL (TYPE WISE)

TYPE 14 - WALL / SURFACE WITH BOTTOM ENTRY **TYPE 14 - 2" PIPE/YOKE MOUNTING WITH BOTTOM ENTRY**



Note: Drawings are not to scale. All Dimensions are in mm.

SELECTION OF MODEL

(1) MODEL CODE

(2) DIAL SIZE

Dial Size	Code
150	6

(3) MOUNTING TYPE

Mounting Type	Code
WALL / SURFACE / PROJECTION MOUNTING WITH BOTTOM ENTRY	14
2" PIPE/YOKE MOUNTING WITH BOTTOM ENTRY*	41

*Mounting bracket will be provided of steel epoxy painted

(4) PROCESS CONNECTION

½"NPT(M) x 2 Nos. (STD)	4NM
-------------------------	-----

Note: Connections like Metric / PT / PF / Flaired / UNF / G / R etc cab be provided on request

PBQ

6

14

4NM

SELECTION OF MODEL

(5) RANGE

REFER TO THE FOLLOWING TABLE

Lower Pressure - mmWC		High Pressure - Kg/Cm ²	
0-4000 mmWC	0-6000 mmWC	0-1 Kg/Cm ²	0-2.4 Kg/Cm ²
		0-1.6 Kg/Cm ²	0-4 Kg/Cm ²
		0-2 Kg/Cm ²	0-6 Kg/Cm ²

Note : Other scale as per the requirement can be provided on request.

(6) OPTIONS

DC CUSTOM DESIGNED DIAL
TS SS TAG PLATE
GF DAMPENING LIQUID GLYCERINE*

CF AISI 316 SS CASE & BEZEL
CC FIVE POINT CALIBRATION CERTIFICATE
MC MATERIAL TEST CERTIFICATE#
TN CALIBRATION CERTIFICATE TRACEABLE TO NATIONAL/INTERNATIONAL STANDARDS

Example	1	2	3	4	5	6
SELECTION OF MODEL	PBQ	6	14	4NM	0-4000 mmWC	XX

#Material Test Certificate will be provided for wetted parts only with chemical composition testing. For others please consult factory.

*Suitable for range 1 bar to 6 bar.

0-4000 mmWC

XX

NESSTECH INC.

INTERNATIONAL SALES DEPARTMENT

1-12-1 Akanehama, Narashino-shi, Chiba
275-0024, JAPAN

PHONE +81-47-453-1182

F A X +81-47-453-0727

NESSTECH INSTRUMENTS PVT. LTD (INDIA)

Survey No. 26/2, "G" Type, Global Industrial Park,
Near Nahuli Railwaycrossing, Village Valvada, Vapi,
Tal Umbergaon, Dist Valsad-396191, Gujrat
TEL: +91-260-299-6920

NESS TECHNOLOGY (M) SDN BHD (MALAYSIA)

No. 42A Jalan PUJ 3/8, Taman Puncak Jalil, Bandar Putra Permai,
43300 Seri Kembangan, Selangor
TEL: +603-8940-1134/8940-1059 FAX: +603-8999-4133