

#### Special Features :

- All 316 stainless steel
- Laser welded flush diaphragm
- Quick connect / disconnect for easy cleaning
- Matching DIN, SMS, RJT, etc. Standards

#### Applications :

- Diaphragm seals are provided in the instruments like pressure gauges, switches, transmitters in order to isolate the sensing element from the main service due to its corrosive, viscous and sedimented nature and to avoid clogging and solidification
- These seals are specially designed for applications where high purity in the process is essential.- typically in food, beverages, dairy and pharmaceutical industries.



#### Specifications

##### STANDARD VERSION

(COMPATIBLE MODELS :PM (NS 50 mm & 63 mm), PB (NS 100 mm & 150 mm), PS,

Range	: Refer range table with nominal sizes
Process temperature	: 10°C to 150°C or as per fill fluid
Instruments connection	: 1/2" BSP (F)
Process connection	: As per DIN 11851, SMS, RJT, IDF
Mounting	: Direct (without capillary)

Diaphragm	: AISI 316L SS
Unit nut	: AISI 316 SS
Body	: AISI 316 SS
Filling fluid	: Glycerin

#### Dimensions - Standard Version

DIN 11851		
DN	M	F(DIN 405)
25*	20	Rd 52 x 1/6
32	30	Rd 58 x 1/6
40	30	Rd 65 x 1/6
50	40	Rd 78 x 1/6

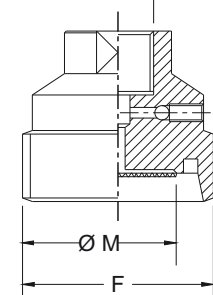
\* Connection 1/4" BSP (F)

SMS		
DN	M	F(DIN 405)
1 1/2"	30	Rd 60 x 1/6
2"	40	Rd 70 x 1/6

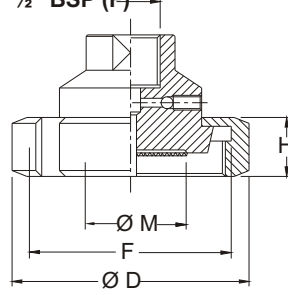
RJT/APV		
DN	M	F (Whitworth)
1 1/2"	30	2" 5/16 x 8
2"	40	2" 7/8 x 6

IDF/ISS		
DN	M	F (Whitworth)
1 1/2"	30	2" 1/32 x 8
2"	40	2" 9/16 x 8

With Male threaded  
1/2" BSP (F)



With Female threaded union nut  
1/2" BSP (F)



DIN 11851				
DN	h	D	M	F(DIN 405)
25*	21	63	30	Rd 52 x 1/6
32	21	70	30	Rd 58 x 1/6
40	21	78	40	Rd 65 x 1/6
50	22	92	50	Rd 78 x 1/6

\* Connection 1/4" BSP (F)

SMS				
DN	h	D	M	F(DIN 405)
1 1/2"	25	74	30	Rd 60 x 1/6
2"	26	84	40	Rd 70 x 1/6

RJT/APV				
DN	h	D	M	F(DIN 405)
1 1/2"	22	Hex. 65	30	2" 5/16 x 8
2"	22	Hex. 79	40	2" 7/8 x 6

IDF/ISS				
DN	h	D	M	F(ACME)
1 1/2"	30	64	30	2" 1/32 x 8
2"	30	77	40	2" 9/16 x 8

Notes : • Drawings are not to scale. • All Dimensions are in mm.

## Range table with Nominal Sizes

Nominal Size of Gauge	50 & 63 mm	50 & 63 mm	50, 63, 100 & 150 mm	50, 63, 100 & 150 mm
				DIN
Connection Size	25 mm (1")	32 mm (1.5")	40mm (2")	50 mm
Ranges (bar)				
1.6	✓	✓	✓	✓
2	✓	✓	✓	✓
4	✓	✓	✓	✓
7	✓	✓	✓	✓
10	✓	✓	✓	✓
14	✓	✓	✓	✓
16	✓	✓	✓	✓
21	✓	✓	✓	✓
25	X	X	✓	✓
28	X	X	✓	✓
40	X	X	✓	✓
-1 to 4	X	✓	✓	✓
-1 to 7	X	✓	✓	✓
-1 to 10	X	✓	✓	✓
-1 to 14	X	✓	✓	✓
-1 to 21	X	✓	✓	✓

## SELECTION OF MODEL

### (1) MODEL CODE

### (2) INSTRUMENT CONNECTION

¼" BSP (F)	2BM	½" NPT (F)	4NM
½" BSP (F)	4BM	¼" NPT (F)	2NM

### (3) DIAPHRAGM

AISI 316L SS	S6L
--------------	-----

### (4) PROCESS CONNECTION STANDARD & SIZE

DIN(25,32,40 OR 50MM)	CH
RJT/APV (1½" OR 2")	CJ
SMS (1½" OR 2")	CI
IDK/ISS (1½" OR 2")	CM

### (5) FILLING FLUID (\* With & Bolts will be AISI 304 SS)

Glycerin [10 to 150 C / 50 to 302 F(Standard)]	01
Liquid Paraffin [10 to 200 0C / 50 to 392 0F]	02
Food Grade Oil [-20 to 140 0C / -4 to 284 0F]	03

### (6) Body

AISI 304 SS	S4
AISI 316 SS	S6

### (7) GASKET SEALING RING

DIN(25,32,40 OR 50MM)	GA	SMS (1½" OR 2")	GC
RJT/APV (1½" OR 2")	GB	IDK/ISS (1½" OR 2")	GD

CSE

4BM

S6L

CH

01

S6

GA

# SELECTION OF MODEL

## (8) GASKET (Sealing Ring) MATERIAL

SILICON	GU
PTFE	GI

## (9) BOTTOM MATING PART( MALE OR FEMALE)

DIN(25,32,40 OR 50MM)	BLM
RJT/APV (1½" OR 2")	BMM
SMS (1½" OR 2")	BNM
IDK/ISS (1½" OR 2")	BOM

## (10) REMOTE MOUNTING(with capillary of Max. Up to 2 Mtrs.)

SPECIFY IN METERS ( e.g.1.5 =1.5 Meters 2.0 = 2 Meters )

## (11) CAPILLARY

AISI 304 SS	S4	AISI 316 SS	S6
-------------	----	-------------	----

## (12) OPTIONS

HELIUM LEAK TEST	HT
DRY SEAL ONLY WITHOUT INSTRUMENT	SD
MATERIAL TEST CERTIFICATES	MC

Example	1	2	3	4	5	6	7	8	9
SELECTION OF MODEL	CSE	4BM	S6L	CH	01	S6	GA	GU	BLM

Example	10	11	12
SELECTION OF MODEL	1.5Mtr	S4	XX

GU

BLM

1.5 Mtr.

S4

XX

## NESSTECH INC.

### INTERNATIONAL SALES DEPARTMENT

1-12-1 Akanehama, Narashino-shi, Chiba  
275-0024, JAPAN

PHONE +81-47-453-1182

F A X +81-47-453-0727

## ■ NESSTECH INSTRUMENTS PVT. LTD (INDIA)

Survey No. 26/2, "G" Type, Global Industrial Park,  
Near Nahuli Railwaycrossing, Village Valvada, Vapi,  
Tal Umbergaon, Dist Valsad-396191, Gujrat

TEL: +91-260-299-6920

## ■ NESS TECHNOLOGY (M) SDN BHD (MALAYSIA)

No. 42A Jalan PUJ 3/8, Taman Puncak Jalil, Bandar Putra Permai,  
43300 Seri Kembangan, Selangor

TEL: +603-8940-1134/8940-1059 FAX: +603-8999-4133