

The Flushing Ring is designed to be Sandwiched between the Process Flange & the Diaphragm Seal. Material Collected in front of Diaphragm can be Flushed out through the Flushing Ring.

#### Special Features :

- Suitable with Flanged or Inline Diaphragm Seals.
- With Double Flushing Ports.
- Available in all Exotic material Grades.



#### Specifications

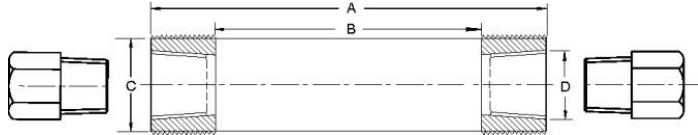
**STANDARD VERSION : FR** ( Compatible NESS Models: CSB, CSI & CSK)

Flange Size	: ½" to 5" as per ANSI B16.5
Material	: AISI 316 SS
Number of Ports	: Two
Port Connection	: 1/4" NPT(F) with Male Plug
Sealing Face	: Suitable to Raised Face of Flange

#### FOR FLANGE TYPE DIAPHRAGM SEALS

FLANGE SIZE	CLASS	A	B	C	D
½"	150 # to 600 #	35	12	30	1/4"NPT OR 1/2"NPT (F)
¾"	150 # to 600 #	43	20	30	
1"	150 # to 600 #	51	25	30	
1 1/2"	150 # to 600 #	73	43	30	
2"	150 # to 600 #	92	62	30	
3"	150 # to 600 #	127	92	30	
4"	150 # to 600 #	157	92	30	
5"	150 # to 600 #	185.5	126	30	

#### DIMENSIONS - STANDARD VERSION



## SELECTION OF MODEL

#### (1) MODEL CODE

FR

#### (2) FLANGE SIZE (As per ANSI B 16.5) (\*Consult factory for drawings of these NESS Models)

XX

1/2"	1 ½"	4"	CSI*
¾"	2"	5"	
1"	3"	CSB*	

#### (3) FLANGE RATING (Do not select if CSB required)

XX

150	400
300	600

#### (4) SEALING FACE

RF

Raised Face	RF
Flat Face	FF

#### (5) FLUSHING RING MATERIAL

S6

AISI 316 SS	S6
AISI 316L SS	S6L
Hastelloy C	HT

Monel	MN
Titanium	TI

# SELECTION OF MODEL

## (6) FLUSHING PORT (WITH 2 MALE PLUGS)

1/4" NPT (F)	2NF	1/2" NPT (F)	4NF
--------------	-----	--------------	-----

## (7) OPTIONS

Material Test Certificate	MC
---------------------------	----

Example	1	2	3	4	5	6	7
SELECTION OF MODEL	FR	XX	XX	RF	S6	2NF	XX

FR

XX

### **NESSTECH INC.** INTERNATIONAL SALES DEPARTMENT

1-12-1 Akanehama, Narashino-shi, Chiba  
275-0024, JAPAN

PHONE +81-47-453-1182

F A X +81-47-453-0727

### ■ NESSTECH INSTRUMENTS PVT. LTD (INDIA)

Survey No. 26/2, "G" Type, Global Industrial Park,  
Near Nahuli Railwaycrossing, Village Valvada, Vapi,  
Tal Umbergaon, Dist Valsad-396191, Gujrat

TEL: +91-260-299-6920

### ■ NESS TECHNOLOGY (M) SDN BHD (MALAYSIA)

No. 42A Jalan PUJ 3/8, Taman Puncak Jalil, Bandar Putra Permai,  
43300 Seri Kembangan, Selangor

TEL: +603-8940-1134/8940-1059 FAX: +603-8999-4133